

FANTASIA FAIR



PARTICIPANTS GUIDE

1986



WELCOME



TABLE OF CONTENTS

I.	<u>WELCOME</u>	
	● Outreach Institute	2
	● Provincetown	4
	● Fantasia Fair	6
II.	<u>PLANNING YOUR FAIR</u>	
	● Planning Your Fair	8
	● 10 Big Fashion Questions	10
	● Underneath It All	11
	● Wardrobe Planning	12
	● Beard Cover	13
	● What To Bring	14
III.	<u>GETTING SETTLED</u>	
	● Transportation	16
	● Pre-Registration	18
	● Registration	19
	● Policy & Practice	20
	● Photo & Video Policy	21
	● Your Hosts & Your Home	22
	● On The Town	24
IV.	<u>PROFESSIONAL SERVICES</u>	
	● Professional Services	26
	● Personal Growth Program	27
	● Charm School	28
	● Speech Program	30
	● Fem-Fashions	31
	● Spouses & Friends	32
	● Couples Program	34
	● Photography Studio	35

NO PART OF THIS BOOK MAY BE REPRODUCED IN ANY FORM OR BY ANY ELECTRONIC OR MECHANICAL MEANS, INCLUDING INFORMATION STORAGE AND RETRIEVAL SYSTEMS, WITHOUT PERMISSION IN WRITING FROM THE HUMAN OUTREACH AND ACHIEVEMENT INSTITUTE: KENMORE STATION, POB 368, BOSTON, MA., 02215.

OUR COVER GIRLS:
 KATHY...ASSISTANT REGISTRAR (Left)
 PAM.....EDITOR, FEMME FARE DAILY (Right)



WELCOME



OUTREACH INSTITUTE

THE FAIR AND THE OUTREACH INSTITUTE

In 1974 members from a Boston group called Cherrystone noted that a west coast event called DREAM had successfully broken away from the traditional local weekend get-a-way and national organizational "city tours" to create a delightful residential week long charm and fashion school for its participants.

By the Spring of 1975 this little planning group quickly realized that a replica of Dream on the east coast might not be a real service to the crossdressing paraculture. There was a need for a different kind of event. Their model steered away from Dream's charming girl's school towards the evolution of a kind of "community college" where the attendees would not only learn the essentials of a fashion beauty course, there would be all sorts of "extra-curricular" activities, and for those who wanted them there would also be workshops and seminars covering the broader aspects of cross-dressing and the paraculture itself. As this new event called "FANTASIA FAIR" evolved through trial and error it was learned that the workshops and seminars portion of the Fair could be expensive and it was decided that they should be put on a "pay as you go" basis for those who wanted them, rather than be paid for from the general revenue of the Fair. In fact, the founders (who had "loaned" \$2,000 for the first Fair in 1975), have from time to time continued to underwrite the Fair and the Outreach until the Founders Debt now is over \$9,000.

Historically, the earnings after debt payment from local or national group events usually went to the sponsors (for personal use) or to the group (to support the group's general social scedule and the like).

Again the leaders of this new event broke from the past and began to think how such funds could help the paraculture as a whole. At that time, and today, the greatest problem faced by individuals was the general lack of understanding on the part of doctors, educators, therapists and counselors and lawyers about the various aspects of crossdressing. This meant that there was a need for an organization which would help these professionals; while, at the same time help individual crossdressers find professionals who wanted to help rather than "pass judgements".

As a result of their foresight we now have The Human Outreach and Achievement Institute, which is the only nationally orientated nonprofit organized solely for these purposes. The Outreach Institute's program is carried out through seminars and workshops, usually conducted in an academic environment or a professional Conference.



OUTREACH INSTITUTE

Dear Fan/Fair Sister,

This will be the twelfth consecutive year that the Outreach Institute has organized this program for the crossdressing community.

Taking place in the friendly environment of Provincetown, each year Fantasia Fair has brought crossdressers from North America, Europe and the Far East. Together, newcomers and returning participants share the joy and pleasure of crossdressing without the burden of guilt and fear.

As a result of sustained friendships and the desire to help other crossdressers, the "Fantasia Fair Community" has emerged. Each member of the community carries the spirit of the Fair back to her home town and shares highlights of this unique experience with her sisters in the local region.

To the newcomer at Fantasia Fair 1986, we invite you to plan for a most rewarding experience and not to harbor any apprehensions. To the returning participants, we welcome you once again and hope that your involvement will provide further for your personal growth through helping your new sisters.

This Participants Guide provides details of the Fairs many programs and will help you plan your week in Provincetown. But, as you read the pages note the pictures of each Program Coordinator and realize that these sisters, and the Fair Staff, have voluntarily given of their valuable time at the Fair to serve you, the participant.

As in all aspects of life, what you receive depends in large measure upon what you give. So as you complete the Pre-Registration Application; please, be generous with your time and talent.

Again, WELCOME TO FANTASIA FAIR 1986...

Warmly...

Ari
Ariadne Kane
Executive Director
Human Outreach and
Achievement Institute



WELCOME



3



PROVINCETOWN



Provincetown is a safe harbour just inside the sheltering arm of Cape Cod.

No doubt, because of its reach into the Atlantic it became the first landfall for the Pilgrims on November 21, 1620 (new calendar). Shortly after this landing the Pilgrims gathered in the cabin of the Mayflower and drew up the Mayflower Compact. This document, based upon a belief in self determination and strong religious convictions, is considered to be a root of our Constitution.

Since the 1600's Provincetown has been tied to the bounty of the sea. Provincetown was incorporated as a Town in 1727. It grew to become a major fishing sea port by 1851, with over 50 wharfs jutting out into the bay. The white wood frame New England sea coast homes for the captains and the crews of these tall ships established the flavor of the town you see today as a sea coast resort. Yet, Provincetown is still a fishing village with over forty boats plying the trade.

Perhaps it is in the character of its historic roots, or for reasons of its ties to the open seas; but, for some reason Provincetown has become a symbol for individual liberty. Its' spindrift seacoast, physical beauty and appeal have attracted artists, writers, and artisans: yet, it is Provincetown's respect for individual rights which has permitted them to flourish. It is this which has brought Fantasia Fair to Provincetown.

Over the past years our dearest friends from Provincetown have served on the Board of Directors for the Outreach Institute. And many others have worked hard to make the Fair possible. Their caring about us with "many kindnesses" has established a special relationship and trust you are about to share in.

Fantasia Fair has found a home in Provincetown and we want you to share it with us and your many new friends, the people of Provincetown.





PROVINCETOWN



PROVINCETOWN THE LOWER CAPE'S ONLY YEAR-ROUND TOWN

WELCOME TO PROVINCETOWN.

This is Fantasia Fair's twelfth year in Provincetown. As we've gotten to know each other better we've gotten to like you more. Provincetown has a long history of "live and let live". People of very diverse backgrounds and temperaments have long coexisted comfortably on our historic shoreline. Portuguese fishermen, their families, artists, writers, entertainers, family groups, singles, gay and straight, TV, TG, TS...all are welcomed here by the people who live in this unique Cape-tip environment.

Hal Goodstein, President
Chamber of Commerce
Provincetown

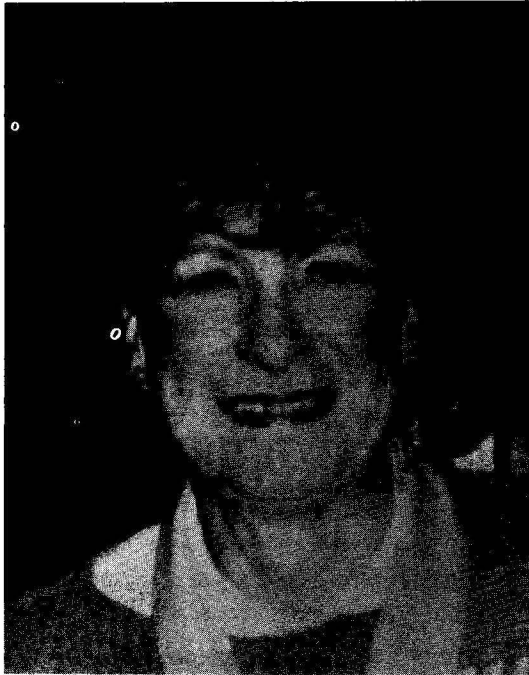


WELCOME





FANTASIA FAIR



SHEILA - REGISTRAR
FANTASIA FAIR



STEPHANIE AUDIO-SYSTEMS
TECHNICAL SUPPORT

FANTASIA FAIR
ADMINISTRATIVE STAFF

COORDINATOR.....BETTY ANN
FEMME FAIR DAILY.....PAM
REGISTRAR.....SHEILA
ASSISTANT REGISTRAR...KATHY
ASSISTANT REGISTRAR...GERRI
VIDEO.....MAXINE
AUDIO.....STEPHANIE
PHOTOGRAPHY.....MARIETTE

12th Annual FANTASIA FAIR



OCTOBER 17-26, 1986
PROVINCETOWN, CAPE COD





FANTASIA FAIR



DEAR HEARTS AND GENTLE PERSONS,

WELCOME TO FANTASIA FAIR 1986!

As you read through these pages one very important fact should emerge in your lovely head; FANTASIA FAIR IS A LABOR OF LOVE FOR A LOT OF US. I have tried to include the pictures of the thirty or so program coordinators and technical support people who are just a part of the total number of people required to make it a success, INCLUDING YOU. Fantasia Fair is us!

In developing this Participants Guide I tried to design it so that the novice cross-dresser will be able to plan for HER FAIR: so, to some of you the information about planning your fair might be abit elementary. But, since I remember how uncertain I felt in preparing for my first Fair eleven years ago, I have included all sorts of ideas for the beginner going to her first Fair.

Fantasia Fair is a living experience and each year it changes, as we have tried to improve the quality of programming by introducing new programs and by modifying old ones. Even if you have been to previous Fairs, I strongly suggest that you take the time to read this Participants Guide, in order that you may see what changes have been made. The new programs are: 1). The House Program (pages 22-23); 2). The Couples Workshop (page 34); 3). On The Town Seminar (page 40); 4). Beauty Fair (page 41); 6). Ladies Night (page 42); 7). Leadership Reception (page 50); and, 8) the Lifestyles Seminar (page 51). We have introduced the Charm School (pages 28-29) while shifting the Fashion & Beauty Workshop to a better time slot (a little later in the morning) and adding a Saturday class. The Fantasy Ball (page 55) is now also a "Mardi Gras" type costume party, so remember to bring a costume. Please note that some events have an additional charge for reasons stated on page 2, in that they are of interest to only certain Fair-goers or they are presented by professionals who are reimbursed in part for their services. We do not believe that the many should pay for the few.

Best wishes, from your sister...

LOVE,

Betty Ann Lind
Coordinator



WELCOME



PLANNING YOUR FAIR

Before you begin the process of planning Your Fair you should carefully read through this Fantasia Fair Participants Guide in order that you can consider the full scope of activities and programs available to you. You will note that the "SCHEDULE" (pages 36 & 37) is designed to optimize your chances to participate in the Fair to the fullest while still having time to tour the scene at Provincetown, as well as availing yourself to the various technical professional support services we offer.

Fantasia Fair is a TOTALITY; Your Fair is determined by what you select to do during the Fair. Over the years we have discovered that an active participant who "does it all", (not only "gets her money's worth"), she also has a great time!

Of course, as a woman you will want to "plan your Fair" in terms of your personal wardrobe requirements and what to bring. In the next few pages we shall discuss these matters as well as provide an insight into what you can expect.

There is a secret which has helped at least three participants to win the BEST DRESSED AWARD at the Fair:

1. Divide the day at the Fair into two major periods;
 - a. Morning/Afternoon, and b. Night.
2. The Morning/Afternoon Period is for casual, career woman, or related type clothes. (A few years ago Provincetown was filled with women in "jeans and tops"; but in recent years women in town and tourist women have moved back to a dressier skirt look.)
3. Your Night wardrobe should be keyed to the major events, (i.e. Cocktail Parties, Dinners, Fashion Show, Follies, and Fantasy Ball), and your participation in these events; and,
4. Draw up a chart prior to the Fair: a. citing each day, (horizontally across the top of the page), b) below each day have a space for your Morning/Afternoon selection for clothes and related accessories, and a similar space below this to cite your Night fashions; and, c) remember that if you "mix & match" (i.e. two suits which can exchange skirts and jackets will give you four separate Morning/Afternoon outfits, while additional "matching" skirts and blouses or sweaters can extend the wardrobe into multiples of the basic pair of suits) this will allow you to use just a few outfits in such a way that you will appear to never wear the same thing twice.

PLANNING YOUR FATE

Looking good is more important than we like to admit and its effects start early. Even among children between the ages of four to six, according to Psychology Today recently, the good looking children were the most popular and even thought to be more intelligent by their teachers, although the facts were not always substantiated by the kids' own IQ's.

It might be stretching it a bit far to say that these children's clothes played more than a minor part in the impressions they made on their peers and teachers, but as we grow up, clothes become an increasingly important barometer of success. They are the instant impression-makers when you first meet a prospective mate, a business client or a new acquaintance.

What you can realistically expect of clothes today is not only that they succeed for you in terms of being attractive, easy-to-wear and very adaptable to different events and seasons, but that they actually add to your social and/or professional success. Attractive (tall women) people, as pointed out in this same report, come out ahead on all counts in several behavioral studies. Most experts in the field would agree that how a person dresses influences almost anyone's judgement, if only unconsciously, of just how "attractive" she is or is not. The attractive people studied were thought to be "kinder, stronger, more interesting, poised, modest, sociable, outgoing and sexier than the unattractive people studied. The good-lookers were expected to get prestigious jobs, make good husbands or wives and have happy marriages," concluded the researchers. Empirical evidence also indicates that "crossdressers" who attempt too drab an "androgynous" look (through an attempt to minimize make-up) and those who dress at the other extreme of "high drag" both are more likely to be in trouble with the public. This public viewpoint is held by both the straight and the gay community, and, therefore, it is very important that a crossdresser display the good taste and judgement of a well groomed woman.

It is important, then, to make sure you are getting the full success potential from your clothes. But you know as well as we do that a look with super success potential for one woman can be a disaster for another. You have to pinpoint the personal success factors for you, and that is exactly what the ten questions (on page 10) can help you to do. Before you make any new purchases, ask yourself these questions, if you can answer yes to all of them, you'll get the most from your clothes and spend your money effectively. If you have to admit even one or two nos, pass up the purchase and look for something else. But, before you decide on any purchase for yourself, be sure to check them out individually with our ten questions.



10 BIG FASHION QUESTIONS



As you plan your wardrobe for the Fair it is important that you ask the following questions in context of the Fair's activities for each individual day in order to look appropriately at your best.

1. Can this look play enough roles to keep up with all the different ones I have to fill? For example, can it move from the office to a casual date, and further into a dressy look with the right change of accessories? If it can't, can I afford the luxury of its limitations?
2. Does it work in style and color with other pieces in my wardrobe - jackets, coats, shoes, etc.?
3. Can I wear it without spending an inordinate amount accessorise it? In other words, is it one of those looks that needs its own special dressing from shoes, jewelry and bag to the coat that goes over it; or can it team up smashingly with the shoes and other pieces I already have?
4. Is the color right with my skin and hair tones?
5. Is the fabric not only right for the climate I live in but can it adapt to others when I travel (through fair and foul weather)? Also, can it cross at least three seasons?
6. Can it take my kind of life, getting in and out of commuter trains, bending down to reach small children or lifting them up, moving from a drafty TV studio to a conference table or whatever my every-day activity needs are?
7. Do I feel comfortable in it psychologically -- is the style too conservative or too trendy for me? Is it **ME**?
8. Is it well made enough to last more than a few wearings without splitting seams or stretching out of shape?
9. Is it worth the money? (Think of the use you'll get from it, not the actual price tag -- plus its seasonal flexibility, its role playing capacities, and its lasting or staying power again.)
10. **FINALLY, MOST IMPORTANTLY: DO I LOOK GREAT IN IT!**

! UNDERNEATH IT ALL !

Before you spend one dime on clothes it is critical that you acquire a good national department store catalogue such as provided by Sears, Penny's, or Lane Bryant. The catalogue you select should include the waist measurements for women in the various size charts, for this will be a key measurement for your personal evaluation.

The key rule of thumb for measuring the size for foundation garments is that when you measure (a) under-bust (the line on top of your folded arms extended about your body so that your "breasts" will rest comfortably "within" your arms), (b) waist (a point measuring the trunk approximately at its "narrowest" which is just below an imaginary line drawn from base of elbow to base of elbow when your arms are folded to measure your under bust), (c) hips (the fullest measurement of your lower trunk including your derriere): YOU SELECT THE LARGEST OF THE THREE MEASUREMENTS TO DETERMINE YOUR SIZE ON THE CHART.

Read carefully the instructions on determining the difference between your underbust, bust (usually underbust + cup size), and bra sizes (usually 5" added to your underbust measurement). A woman's dress size is determined by bust; her lingerie and foundation garments are calculated in terms of bra size. Also, if you are not matronly avoid a cup size larger than C (slightly B is average in terms of body shape image). Bust cup padding is shape, not "jiggle". Expensive breast form cups should be properly fitted; not purchased by catalogue.

Although the "classic" hip to waist ratio is that the hips are 10" inches larger; foundations are usually calculated at about 2" larger than bra size for a hip size. In order to fill out the hips it may be necessary to acquire a padded girdle ("phantom panty") or similar padding.

Your first undergarment purchase should consist of a high waisted (panty styled) girdle, long line bra, and a tailored slip. The bra and panty girdle should be made of a "stretch" fabric, and the slip should be plain. The girdle is worn over the "phantom panty" (hence its name) so that the padding is not lumpy. Through this simple combination with proper padding your basic feminine shape should emerge. The smooth lines of the slip should conceal the fact that you are wearing a foundation. The outline of a woman's foundation garments should not show through her clothes if she is a lady of quality, nor should she have "bulges" created by foundation garments which are too tight.

PROPER UNDERGARMENTS CREATE THE SMOOTH FEMININE SHAPE.

PLANNING YOUR FARE 00



WARDROBE PLANNING



Contrary to popular belief good looking clothes need not be expensive. National department store catalogues that cater to the mass market are less likely to get caught up in a "fad" since a wrong mass buying decision on their part can lead to a financial disaster. Unlike expensive designer fashions, which are cut often with narrow seams to tight patterns, catalogue clothes are usually designed, sized, and cut to patterns more tolerant to the figure so that there will be fewer returns.

Turning to the size chart in your catalogue(s) you should note your height in inches on your note pad, and then check to see from the charts whether you fall within the height ranges of Juniors & Misses (63" to 66½" average/"67" to 72" tall) OR Women's & Half Sizes ("72" to 67½" tall/"67" to "64" average). On the average the catalogue charts have a body trunk to leg inseam length ratio which creates the image of a woman having longer legs and a shorter body trunk than a man. The magic number is about 4". Therefore, a man would have to be over 71" tall before he starts looking in the Tall Size selections, and if he is less than 67" tall he should seriously think about looking at the Short Sizes or Half Sizes (especially if his inseam is less than 30"). As noted in our discussion on "Underneath It All!" on the preceding page your measurements should be made over the feminine shape achieved with your foundation and related padding.

Next, select a very simple inexpensive "shirtwaist" style dress. Order this dress only and try it on for a test of your basic size. If it doesn't fit, return it and order a different size, women do this all the time. (Sears has a Half Size catalogue which offers shoes. Order a "cheap" CLOSED TOE pump by guide in catalogue to get proper fit. Mens and womens shoes are not the same basic size, a man's foot is WIDER, therefore, order a size wider than your mens shoe.)

Using the "mix & match" approach and the four steps discussed on page eight you should come up with a fair idea as to the wardrobe you may need for the Fair. Remember that the mix and match approach is based upon determining how "few" clothes you will require.

Just as a wig should approximate the color of your natural hair, your first woman's suit should be in a color that looks best on you as a man. (Surprise!) Then your "mix and match" clothes should blend with that suit as should your accessories. On pages 14 & 15 we shall provide more ideas on what you should bring.



PLANNING YOUR FAIR



BEARD COVER



Attached to the shaft of each human hair is a tiny muscle which contracts to hot water and thereby brings the hair erect so that a barber can give a close shave. This process opens the pores, so after shaving use cool water to wash the face off. Next use a light moisture lotion to prepare the face for make-up. **WHENEVER** you use a lotion, make-up, or any skin product remember that the most popular "drug store" Name Brands are: 1). cheaper; 2). subjected to generally tougher quality control checks than "expensive brands" due to the company's greater mass market exposure to suit; and 3). usually chemical clones to the "expensive brand".

Regardless of race, there are two basic under skin pigmentation tones; 1). rose-pink with a blueish pigmentation; and, 2). peach-pink with a yellowish pigmentation. Beard, hair, and eye color all can be divided by this same color tone factor. The Eight Minute Make-Over & Color Me Beautiful are based upon this secret discovered by Robert Dorr in 1950. Since then we have learned that a pastel green will neutralize rose-pink pigmentation and pastel purple will do the same to peach-pink.* Thus a light appropriate color application (eyeshadow) under your foundation can cut beard shadow. Since most of us have the rose-pink pigmentation; Hollywood make-up artists (in trying to cover the male beard) have discovered that an orange-red blush tone usually called "sunburn" by various manufacturers (because of its coloration on our skin) can effectively block most heavy beards where the use of white cover can actually bring out a BLUE beard.

Once you have applied the "color" to conceal the beard the next step is to select a foundation to neutralize that color so that the beard area has the same general hue as the face. There is a line of concealer products offered by several manufactures (Recover, Cover Mark, Diminish) which are designed to: a) "breathe" in hot weather; b) be waterproof; and c) cover scars, tattoos, and other serious skin blemish problems. Usually the term "rose" or "pink" means the product will blend into the rose-pink pigmented skin, while the others "light", "medium", "brunette" will compliment the peach-pink pigmentation. Rose-pink on peach-pink skin turns it mask orange toned, peach-pink on rose-pink turns the skin to a white paste mask like shade.

Use the concealer product over the color (pat in, don't rub off) applied to the beard area. Practice until the blend with your natural skin is right. (Use daylight bulbs, and work towards using just enough cover to conceal.) Then apply a regular foundation and your make-up.

*ESTEE LAUDER sells a "Color Primer" as "Under Cover" in these shades to be worn under a foundation.

PLANNING YOUR FACE



WHAT TO BRING



If you arrive alone in a packed station wagon towing a U-Haul, chances are you brought too much. However, as most returning Fair-goers will attest, P-town weather is unpredictable, so it is best to be prepared. Also, if you are anything like the rest of us, you are likely to forget something and discover that little seaside resort P-town doesn't have it; so, here are a few reminders and suggestions in addition to what you already plan to bring.

THE SWEDISH AMERICAN PRINCESS

Betty Ann Lind, our Coordinator, packs for the Fair as if she plans to move to Provincetown. Clothes from her wardrobe have helped four Best Dress Award winners to survive. When she first came to the Fair it looked like an African safari had arrived. She had even brought along a dress rack, just to be safe!

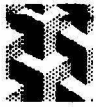
Over the years she developed the Day & Night worksheet described in "Planning Your Fair" (page 8). And she now uses the color theme approach to mix & match, i.e. she sticks to one main color for her Fall wardrobe (black, brown, or burgundy). Thus, if the theme is "brown": only the mix & match items which interchange with brown are brought, and such things as black and burgundy shoes (etc.) are left home along with their theme wardrobes. If you are building a wardrobe start with a single color theme and save money by sticking to it!

She then uses the Day & Night sheet to "package" each outfit (to include accessories and lingerie) to be certain that they are neat, free of tears, and fit.

Betty Ann makes up 3x5 card lists of what she needs to support the theme wardrobe, and her Fair plans. Using these cards the following "kits" are packed usually in plastic sewing boxes or shoe boxes to keep everything contained:

Clothes Care w/sewing kit	Hair/Wig Care
Skin Care	Make-Up with cape
Bath Care with shower cap	Shoe Care
Jewelry Box	Writing Stationary

She packs a battery radio, tape recorder (for Speech Classes and rehearsal of her Follies Act), a travel iron, and a portable lighted mirror. In with these items she includes a paper towel roll, flashlight, tissues, music tapes, and ALL THE MATERIELS MAILED TO HER ABOUT THE FAIR SUCH AS THIS GUIDE.



WHAT TO BRING



Her basic wardrobe (which is larger than you might need) consists of:

- 1 Rain Storm Coat with Hood
- 1 Car Coat or Long Fall Coat
- 1 Umbrella
- 2 Handbags & An Evening Clutch
- 1 Dressy Shawl or Stole for Cocktail Parties, etc.
- 3 Mix & Match Suits (with skirts/slacks)
- 3 Matching Skirts
- 6 Blouses
- 2 "After 5" Dresses for parties and dinners
- 1 Formal Evening Gown for Awards Banquet
- 6 Pair of Shoes (Sneaker, walking, evening, etc.)
- 3 Nightgown Peignoir Sets for PJ Party
- 1 Pair of bathroom slippers
- 4 Foundation and Slip sets (and what goes in them).
- 4 Panty Hose
- 1 Costume for the Fantasy Ball
- 1 Leotard/Tights set for Fashion Beauty Exercise Session (or maybe some loose clothes).
- 2 Wigs, with 1 wig block.
- 1 Male self emergency suit of clothes, etc.

A general "notions" box with panties, scarfs, a roll of twine, transparent tape, gloves, rain bonnet, and the like last minute items completes her war kit.

THE GYPSY PRINCESS

Every woman who travels has to think like a Gypsy Princess knowing that she will undoubtedly have to lug her own luggage and since she must travel light and fast she must make every item she packs serve in as many combinations as possible. She knows that jewelry, scarfs, belts, and imagination can turn a simple blouse & skirt into several different looks. When you plan what to bring to the Fair think about the Gypsy Princess and what she might bring.

VISA & MASTER CARDS ACCEPTED
PRE-ORDER NEW CATALOGUE \$8.00

fem & fashions

157 W. 57TH STREET, SUITE PH.B, NEW YORK, N.Y. 10019

Muriel Olive

(212) 582 - 6823
BY APPOINTMENT ONLY

Lingerie Foundations,
Breat Forms & Padding,
Cosmetics, Wigs, Jewelry,
Sportswear & Dresses,
Alterations & Fashions
Made-To-Order,
Analysis - Counseling
Make-Up & Charm Sessions
on Hourly Basis.

PLANNING YOUR FAIR





TRANSPORTATION



HOW TO GET TO PROVINCETOWN

By Car From Boston

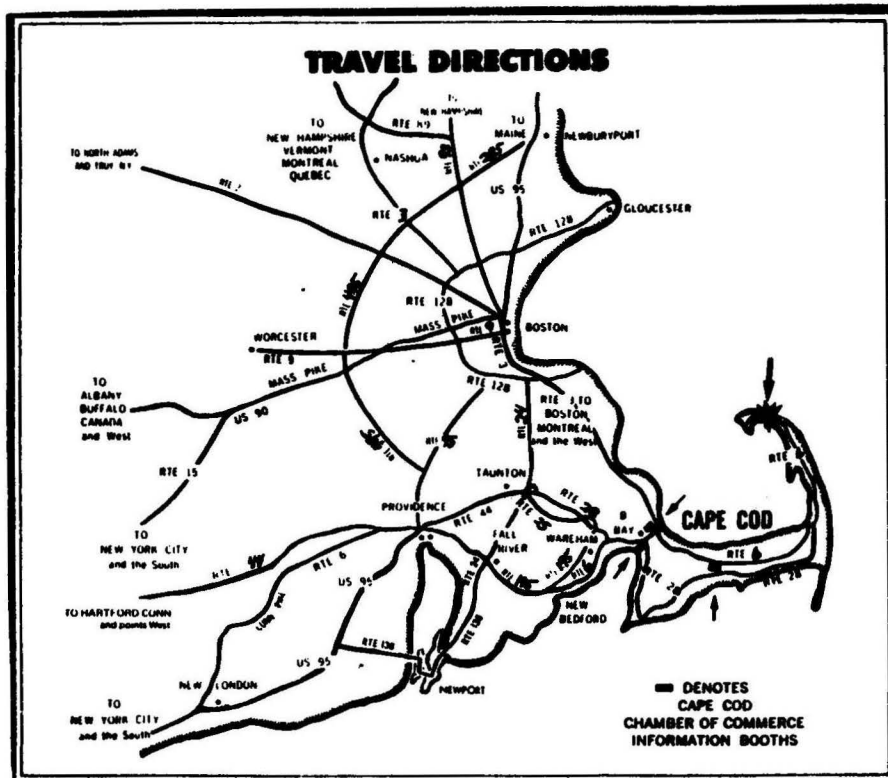
Take Rt. 3 south to Cape Cod. Cross the Sagamore Bridge to Rt. 6, and continue on 6 all the way to P-town. (NOTE: Don't be confused by Routes 6 East and West. These run next to the canal, and you should not use them.)

By Car From The West

Take the Mass Pike to I-495 South (at Westborough). Take I-495 to Rt. 25 South (just past Raynham). Get on Route 6 East and follow it to the Sagamore Bridge. Then follow Route 6 to Provincetown.

By Car From The South

Take I-95 to Providence, then I-195 to Route 25 South (near Wareham). The super highway ends very quickly. Get on Route 6 East and follow it to the Sagamore Bridge. Then follow Route 6 to P-town.





TRANSPORTATION



HOW TO GET TO PROVINCETOWN

By Plane

Fly to Logan Airport in Boston. Contact PBA (Provincetown Boston Airlines) for flight times and reservations to P'town. PBA is at the Eastern Airlines terminal. Their phone numbers are: a). At Logan Airport, (617) 567-6090; b). Within Massachusetts, (617) 771-1444; and, c). National Toll Free, (800) 282-3197. PBA has flights about every two hours. When you arrive at P-town, take a taxi to the Fair's Hospitality Center.

By Bus

Trailways and Greyhound have connecting services at Boston to Hyannis. Change at Hyannis for the P-town bus. Contact either bus company for schedules and fares. When you arrive at the P-town bus station, take a cab to the Fair's Hospitality Center.

By Train to Boston

AMTRAK services Boston, and the train arrives at South Station. Trailways is located adjacent to the South Station Complex. Take the bus from Boston to Hyannis and then to P-town.

YOUR AUTOMOBILE & PROVINCETOWN

Provincetown and the Commonwealth have no regulations concerning the manner of dress while operating a motor vehicle. If you choose to drive, carry legal identification, a valid driver's license, and obey all traffic laws. If you are stopped for an infraction, remain calm and show the officer your legal identification. This is not the time to pull out the fake ID you paid \$5 for! Treat the officer as a lady or gentleman and you will be treated as such.

We do not have legal jurisdiction to enforce any parking privileges. There will be short term parking near where the Hospitality Center is only during Registration. Your lodging site should provide you with a parking space. There are five Public parking areas shown on the map on the back cover of this Guide. The one on Commercial Street (by the wharf) is lighted and patrolled by the police. PLEASE OBSERVE ALL TOWN REGULATIONS CONCERNING STREET-CURB PARKING. The Fair is not responsible for any tickets received in violation of city ordinance.



GETTING SETTLED



07

PRE-REGISTRATION

GETTING TO KNOW YOU

In essence, each participant who attends Fantasia Fair has a femme identity (now it's brother's turn to hide in the closet). Prior to the Fair you will be spending a good deal of time putting together her "image"; but, for now we need more information about her as a "real" person. This is what our PRE-REGISTRATION APPLICATION is all about. This information is designed to do four very important services:

1. IT HELPS YOU TO CREATE YOUR "LEGEND";
2. IT PROVIDES YOUR SISTERS WITH A "PROFILE";
3. IT HELPS IN PLANNING EVENTS;
4. IT HELPS YOU PLAN YOUR FAIR.

YOUR LEGEND

When you meet someone in a social situation, you will be asked all sorts of questions: "Are you married?" "Where did you go to school?" "What do you do for a living?" "What are your hobbies?" "Do you have children?" "Pets?" A "real" person can answer these questions, can "sister"? A spy calls this life's history, her LEGEND. At the Fair, especially at LADIES NIGHT (page 42) you will need one.

YOUR PROFILE

When you arrive at the Fair you will receive a great little memento of the Fair called the PARTICIPANT PROFILE. This pamphlet contains a brief femme profile of each participant. It is very useful during the Fair as a means to "getting to know your sisters", and after the Fair it is a neat keepsake.

HELP IN PLANNING EVENTS

The Fair is a quality program and we want everyone to have a chance to "do the whole thing". Each event has a program coordinator who needs 1). sisters to help her; 2). to know how many plan to attend the event (most events involving a "fee" require advanced registration because of quality control factors or limited facility space); and, 3). to find out if there might be a special equipment need (i.e. a piano act in the Follies could use a piano).

PLANNING YOUR FAIR

As you fill in the "Activity, Seminar & Workshop Checklist", and complete the other information asked for in the PRE-REGISTRATION APPLICATION you will be deciding what you do or do not want to do at the Fair; in short, you will be planning YOUR FAIR.

If you decide at the last minute to join into a particular event, we understand, that is why we have sisters ready to help you at our registration desk at the Hospitality Center...





REGISTRATION



PRE-FAIR CONTACT

You will receive a letter with your ARRIVAL CARD (see page 18) prior to the Fair providing you with information as to the site of the Fair's Hospitality Center, the official phone number (message center), and other relevant last minute information. Until October 15th the contact numbers will be (no collect calls, please):

- (703) 751-6271 (ask for EVE GOODWIN).
- (617) 277-3454 (ask for Ariadne, or leave a message on Tape recorder.)

THE HOSPITALITY CENTER & REGISTRATION.

When you arrive at the Hospitality Center, leave your luggage in your car! Your accommodations will be at another site. Signs within the Hospitality Center will direct you to the Fair Registration Desk. If our Registrar, (Sheila), or one of the ladies at the desk is busy when you arrive, please be seated and relax. There will be a hostess to greet you and refreshments will be available. At the Registration Desk you will be given your room assignment (with directions to your accommodations), an information packet, an ID Card which will serve as your admission pass to many events, and a registration card for you to complete. The Registrar and her volunteer staff will be delighted to answer any questions you may have about the Fair and accommodations.

CHECK-IN HOURS.

The Registration Desk will be open Friday, October 18th, from noon to 8 PM and someone will be on duty for shorter periods of time on other days (centered around the time you indicate upon your ARRIVAL CARD). If you find that you will not arrive at the time you indicated on your Arrival Card, please call and let us know your new arrival time so we can make adjustments.

LATE ARRIVALS

If you arrive very late at night or in the unlikely event that no one is at the Registration Desk, don't worry. There will be a sign at the desk with instructions for late-comers. You should also check with the Inn desk clerk where the Hospitality Center is located, who will have been briefed and may have a message from the Registrar for you (in your "femme" name). If you travel "en femme" then by all means come as your femme self. Otherwise, we suggest you come as "brother" and make a changeover in P-town.



GETTING SETTLED



109



POLICY & PRACTICE



FINAL PAYMENT

Final payments for the Fair are due 45 days prior to the Fair. Therefore, any outstanding balance on your registration fee should be mailed in time to reach the Outreach Institute post box no later than October 5th. If for any reason you cannot meet this deadline, you may pay at the Fair with cash, traveler's checks, MasterCard or Visa. (No personal checks will be taken.) If you still have a balance due on seminars you have chosen to take, it may be paid at registration time.

ARRIVAL CARD

A postage prepaid postcard will be sent to you. Please write your estimated arrival at Provincetown (date & time) on the postcard. If you can be specific to within a few hours that's terrific! No other information is necessary. Mail the card as soon as possible - it will help us to schedule our volunteer help at the Fair's Hospitality Center. We will need the card; therefore, even if you arrive on the first day of the Fair.

ID CARDS

Fantasia Fair ID cards will be issued to you at registration. This card will serve as your admission to shows, events, parties, banquets, etc. Because there are some "coat-tailers" who come to Provincetown trying for a "free Fair" we can not be lax about requiring the card; so please be sure to have it with you at all times. You may actually be asked by a merchant in P-town if you have a card, particularly if a Fair discount is involved.

GUESTS

You are welcome to bring guests to Fantasia Fair functions IF the following are observed: (a) if a guest fee is required, we will expect that it be prepaid; (b) double-check to see if guests are permitted at the function to which you wish to bring the guest. Guest fees can be paid at the Hospitality Center or to the Coordinator.

CASH, CREDIT & CHECK CASHING.

We strongly recommend that you use traveler's checks and credit cards during your stay at the Fair. Personal checks are extremely difficult to cash. We will honor your VISA or MasterCard for cash advances (a 5% service charge exists for this emergency service).





PHOTO & VIDEO POLICY



THE CAMERA & YOU

Anyone in the crossdressing paraculture is well aware of the simple fact that the photographic and video industry earns a fortune out of our fantasies. But, is that photo of you, YOU? We don't know; but we do know that with over 17,000,000 males in the U.S. within the statistical population profile of the group attending the Fair it is unlikely that someone seeing that picture will be able to say: "Bye Golly, that's good ole George!"; (unless George shows it to them). The ladies, whose pictures you see in this guide all share your concerns for privacy, they live in the real world as successful men and/or women.

MISUSE OF PHOTOS.

In order to protect Fan/Fair participants, these are the policies of the Fair:

- Participants may photograph Fan/Fair activities for their own purposes provided that all persons being photographed have been asked and have been given their consent.
- Sound video & movie cameras are prohibited, with the exception of the video cameras operated by the Fan/Fair staff (who will be introduced to the group as a whole).
- No person, other than a participant, employee, or agent of the Fan/Fair Administration may carry a camera or photograph activities or make sound recordings without the express written permission of the Fan/Fair Administration.
- MEDIA must also obtain express written permission of the Fan/Fair Administration to attend any function. In addition, media people must obtain written releases from any participant photographed or interviewed. This also applies to any participant who is acting as an agent or reporter for any media or proprietary publications. You must have Fan/Fair Administration permission to send any photos to publications.
- The Fan/Fair Administration reserves the right to prohibit anyone from carrying a camera or making sound recordings of Fantasia Fair activities, but wishes to advise participants that it has no such authority to control such activity in public areas outside of the Fair, such as the streets of Provincetown.

PHOTO & VIDEO RELEASE

Participants will be asked to sign a Photo & Video Release so that video recordings or photos taken of them by our staff may be used within Video Tapes or Publications used to present the Fair to Professional and Academic Groups, Crossdressing Clubs, and those participating in the Fair who may want a more permanent memory of Fantasia Fair.



GETTING SETTLED



OUR HOSTS @ YOUR HOMES

THE INN & YOU

Provincetown has over sixty Inns which probably can claim that they were originally homes prior to their present use. This Spring our staff personally selected a handful of these beautiful Inns (and a few modern ones too) to be your home during the Fair. Each Inn was inspected to be sure that it would: 1). be a home with an Inn Keeper Host who appreciates the Fair and you; 2). be suitably established for a fine lady such as yourself; 3). have a social area for your house meetings; 4). have heated rooms to ward off the chill of early Fall nights; 6). have the lighting, mirrors, and storage space required by the average crossdresser; 7). have adequate bath room facilities; 8). provide parking for its residents; and, 9). be near the center of town and the various Fair locations.

YOUR HOST

Because Provincetown is the largest gay resort area in the United States, it is safe to say that your Hosts are gay. In most cases they have invested their life savings into your Inn to make it a personal show piece, and competitively attractive in a community where quality is a criteria. The Fair is post seasonal for Provincetown and your Host has "had" it with the chaos of Provincetown during the season when a town of a few thousand becomes a crowded city. Most Inns close their doors to get about the business of preparing for winter and your Hosts' vacation. But, over the years your Host has come to know us and most of them look forward in fascination to seeing our "fun" group.

YOUR HOUSE "HOSTESS".

Each Inn will have a volunteer hostess, who has attended a previous Fair and can help you. She serves as the liaison between you and the Inn Keeper in case you have any problems, and she can also help you with the Fair staff. During the Fair she will have three late evening "wine & cheese" parties for your house so that you can let your hair down and talk about those things that interest your group (perhaps as a pajama party). In case of an emergency she will help as a residence counselor or house mother might... And she will keep you posted through the distribution of the FEMME FARE DAILY. Or she will sit down with you for a nice quiet chat...



GETTING SETTLED



OUR HOSTS@YOUR HOME

YOU AS A GUEST

Please treat the Inn as your home, and don't expect it to be either a plastic motel or the Waldorf Astoria. Please:

- Understand that because of limited facilities, all room assignments are final unless a dire need for change can be shown. If the need to change is based on an error by the Fair staff (e.g. leaky pipes, double occupancy instead of clearly stated single occupancy request, etc.) the change will be made without a surcharge. Placing you in non-negotiated housing at your request (i.e. a motel such as the Holiday Inn) can lead to a surcharge equal to the differences in rates.
- Although many hosts will try to help you move in, they are not bell-hops. Share in the effort.
- PLEASE, use paper towels, tissue, or your own wash cloth to remove make-up. Beard cover, especially, is very difficult to wash out of snow white towels.
- Take the time to meet the Inn staff, they know P-town and can help you.
- Remember to leave a tip when you check-out, the Fair registration does not cover this service.



MICHELLE Hostess HARGOOD HOUSE

Twelve Center Guest House

PROVINCETOWN



Spacious Rooms
With TV
Private or Semi-Private Baths
Continental Breakfast
Central Location • Patio • Parking • Free Brochure

hosts: Jon & Roger
12 Center Street, Provincetown, MA 02657
Reservations: Tel. (617) 487-0381



Bradford Gardens Inn

178 Bradford Street
Provincetown, Mass. 02657
(617) 487-1616

M. Susan Culligan



GETTING SETTLED



23



ON THE TOWN



The following list of DO's is intended to help you feel comfortable during your stay in Provincetown, and to answer some immediate questions you may have, and help lead to an enjoyable Fair.

- DO Feel free to leave your hotel room or apartment in any presentable state of dress. **AND DO WEAR YOUR BEST SMILE!**
- DO Explore P-town by yourself or in groups. P-town is a very open community.
- DO Feel free to dine or drink on the town. Most clubs and restaurants will welcome you, but we recommend you patronize the establishments listed in our directory of advertisers.
- DO Take as many photographs as you wish of P-town and the Fair. Please keep in mind the feelings of others when photographing Fair activities and participants. **AND DO REMEMBER HOW HAPPY YOU WOULD FEEL IF A SISTER WAS KIND ENOUGH TO MAIL YOU A PHOTO FROM THE FAIR OF YOU.**
- DO Visit the local shops and boutiques. Most, you will find, will be happy to serve you, and most will accept "brother's" credit cards.
- DO Feel free to call upon the local police (911), fire, and rescue units in case of emergency. They will assist you as they will any other citizen.
- DO Bring guests, if you wish, to public Fantasia Fair functions. Please consult the F/F office about non-public events.
- DO Feel free to consult the members of the F/F staff at any time in regards to any problems you may have.
- DO Please, at all times, conduct yourself as a lady or a gentleman (which ever you prefer). Treat others as you wish to be treated. Please help us maintain a favorable image of Fantasia Fair.
- DO **ABOVE ALL ELSE, HAVE AN ABSOLUTELY FABULOUS TIME!**





ON THE TOWN



PROVINCETOWN

Take time to see Provincetown. Walk along its beautiful beach front. Tour the dunes of the National Park which surrounds it. As the PBG Guide says: "Within the 1x3 mile boundaries of the town there are three beaches, miles of bike and horse trails, acres of pine scented woodlands, long stretches of dunes covered with rose, beach plum, blueberry and bayberry bushes and lush meadows full of thick rushes and waving beach grass."

SHOPPING

"From vintage clothing to designer fashions, from leather to lace, from antiques to futuristics, from soft sculpture to brassy bronzes and a king's ransom in all styles of jewelry." Provincetown is an art lover's paradise where you can even get your portrait in pastels while you wait. Do go on the town.

DINING ON YOUR OWN

There are more than 80 eating places in P-town ranging from elegant chef staffed restaurants which would rival any of the best to junk food stops. And in P-town when they say the sea food is fresh, you can believe it!

REST ROOMS

Which to use? We offer this suggestion; use the restroom you feel most comfortable in using. P-town is a relaxed community and restroom segregation is not one of the "biggies", especially during the Fair. Feel free to enter either door.

EMERGENCY (Call 911)

This number (911) will alert the Police, Fire, or Rescue Squad. They know all about us, and they will help you as they would anyone else in Provincetown.

POLICE

The police in P-town will protect you! There is a chance some immature, insecure people may confront or tease you in an attempt to provoke a reaction. Provincetown is a real town not a closet. (RELAX, remember your sense of humor.) If you are accosted by anyone, keep calm. Try to ignore the situation and proceed to your destination. Please, do not verbally or physically abuse, touch or strike a heckler unless the person actually assaults you. Notify the police immediately of any harrassing situation. They can, and will serve and protect you!



GETTING SETTLED



26



PROFESSIONAL SERVICES



Each year the Outreach Institute sets out to find those who can best help the Fantasia Fair participant to improve in her personal growth and development. The professionals assembled this year to serve you are each highly skilled in their particular field of endeavor and all of them have had years of experience in providing counseling support to the crossdressing community.

Each professional serving you at Fantasia Fair has taken off valuable time from their regular employment or practice, sacrificed precious vacation time, and paid for their Fair participation. In a few cases an honorarium is provided, and in certain instances there is a reimbursement for travel costs or supplies (used to help the participant). There is no way to compensate them for their devotion except to respect their "free time", include them into your activities, and to say "Thank you".

Individually, and as a group our consultants are pleased to consider themselves as a "profit center" for the Fair; because, they know that they are making it possible to continue the Outreach Institute, and reduce for you the general costs of the Fair. They also are very aware of the fact that if their service is not what you want, you will not pay for the service or attend the workshop or course and the Fair will need to seek others to provide professional services. To paraphrase, "they make money for the Fair the old fashioned way, they earn it..." They earn it by giving you their very best..

But, they also donate a great deal of their valuable time to each Fair participant. One only has to watch abit to see how each professional will pause and give of themselves to a Fair participant in need of help. They actively care about you as an individual, that is why the Outreach has invited them to serve at the Fair, and why they are in Provincetown with you.

Arrangements are being made so that if you need private consultations, our professionals can serve you, on an appointment only basis, for a pre-set fee paid to the consultant. The location for such consultation, fee structure, and general hourly schedule available will be announced at the Orientation. The Outreach Institute does not "share" in these private consultation fees, nor does it compensate the consultant for providing this service. This separation between the consultant and the Outreach is established for mutual legal protection, and in order to preserve the confidentiality of the service provided; and, in no way reflects upon the quality of professional service provided in private consultations to you.





PERSONAL GROWTH PROGRAM



THE PROGRAM

How many of you have been to a helping professional who has considered you "sick" and tried to "cure" you? At the Fair we have a different attitude. We're interested in personal development at many levels and have, therefore, provided a program in which you have the opportunity to talk with others, guided by a skilled professional who accepts you as you are.

Here are some reasons you might come to these groups:

- TO take the opportunity to understand more about yourself;
 - TO share experiences and feelings with others as part of a community;
 - TO form bonds that are more than superficial -to possibly develop some meaningful friendships which last beyond the Fair;
 - TO have fun, get a humorous perspective, see the amusing side of our lives;
 - TO become clearer about our goals, your relationships, the skills you need to develop;
 - TO improve your ability to communicate who you are and how you want to live your life;
 - TO rid yourself of negative feelings such as fear, anger/guilt so you can be as loving and as lovable as possible;
 - TO have a greater sense of the feminine parts of your psyche beyond clothes and make-up by practicing what women do naturally (disclosure, vulnerability, supportive, nurturant behavior);
- AND,
- TO work with a professional who accepts you, supports your desire to live a full happy life in accordance with your nature and who, as a woman, is willing to model behavior by revealing who she is, while encouraging you to do the same.

PERSONAL GROWTH I, SELF: (Four Hours - \$40).

This workshop helps the individual: a) transcend feelings of insecurity, shame or guilt; b) overcome bad experiences from past or fears about what has happened to others; c) understand the relationship between "brother" and "sister" in the individual's psyche-(having a good one!); d) recognise the effects of societal attitudes on TVs; and, e) how to handle them.

PERSONAL GROWTH II, INTER-PERSONAL: (Four Hours - \$40).

This workshop focuses upon: a) whether to tell or not and whom; b) how to deal with the feelings of others, c) communicating with children who suspect or know; d) dealing with antagonistic or curious strangers; and, e) wanting and having primary relationships being who you are (dangers and delights).





CHARM SCHOOL



THE CHARM SCHOOL PROGRAM

The classic Fashion & Modeling School curriculum is divided into two units; 1). Charm & Basic Self Improvement; and, 2). Professional Fashion Modeling. The Charm School portion of the class work covers such topics as:

- 1). Posture & walking;
- 2). Figure analysis & diet;
- 3). Body movement;
- 4). Hair care;
- 5). Personal grooming & manicuring;
- 6). Skin care & facials;
- 7). Make-up;
- 8). Wardrobe planning;
- 9). Voice & diction; and,
- 10). Social graces.

In reviewing Fantasia Fair's basic program structure it would appear that the Fair participant through completion of the following activities at the Fair has completed the course requirements of a Charm School:

- BEAUTY FAIR (page 41)
- FASHION SHOW (page 48)
- FASHION & BEAUTY COURSE (page 29)
- SPEECH I (page 30)

And it is doubtful that any Charm School could be so much fun to go to as FANTASIA FAIR...

Join In The Excitement!



12 Johnson St., Provincetown MA 01957
617-487-0138

Front Street
a restaurant

Provincetown
487-9715





CHARM SCHOOL



PAULA
Program Coordinator
FASHION BEAUTY COURSE

FASHION BEAUTY COURSE

Paula is THE single most knowledgeable person in the United States (if not the world) on the subjects of fashion and beauty, when we deal with the specific needs of the cross-dresser. Over the years hundreds of us have been absolutely amazed to watch, before our eyes, the transformation of an "old sea dog", into a beautiful young lady. Her class not only covers the basic curriculum of a Charm School (and much more), her instruction focuses exactly upon your special technical problems (as a male with full secondary characteristics wanting to look like an attractive woman). This twelve hour course is offered to all participants from Monday, October 20th to Saturday, October 25th, between 10 AM to noon: with a "continental breakfast" buffet prior to each work session (a part of the Fair package), as an inducement to our sleepy heads to rise and shine, and learn the secrets of beauty from an expert, our Paula.

Paula also offers, by appointment. individual sessions (usually at 9 AM, prior to each Fashion Beauty workshop).

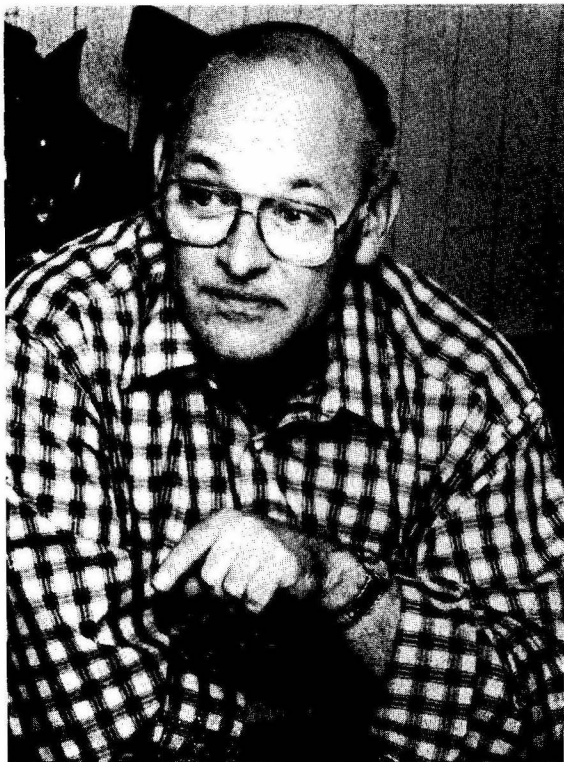


PROFESSIONAL SERVICES



29

SPEECH PROGRAM



BUD HEUER, PhD
Program Coordinator
SPEECH IMPROVEMENT PROGRAM

Dr. Bud Heuer again leads these popular workshops. This year the Speech Improvement Program consists of two workshops; Basic and Advanced.

BASIC SPEECH IMPROVEMENT WORKSHOP (Six Hours - \$100).

The beginner's workshop will consist of one session with all those registered for the workshop, and three additional sessions with groups no larger than four participants. Each session will last an hour and a half. Training will cover one or more of these aspects of speech: relaxation, resonance, pitch control, pronunciation and articulation techniques, and conversational style.

ADVANCED SPEECH IMPROVEMENT WORKSHOP (Six hours - \$135)

The advanced workshop is open to those who have previously participated in a beginner's workshop and need no refresher course, but consider themselves to need more work in areas such as pitch control, pronunciation and articulation, and conversational style. This workshop consists of private individual instruction.

Please bring a tape recorder to practice with if you wish. And please tell Dr. Heuer if you are in the Fashion Show or Follies, so that he can properly schedule your sessions.





FEM-FASHIONS



MURIEL OLIVE
Program Coordinator
IMAGE DEVELOPMENT

Muriel Olive has a private Penthouse boutique in New York called FEM-FASHIONS, located at 157 W. 57th Street, (212) 582-6823). (THE PHONE NUMBER IS PROVIDED FOR YOU SO THAT YOU CAN CALL HER FOR ANY PARTICULAR NEEDED ITEM WHICH SHE CAN BRING TO THE FAIR.) She has been discreetly catering to the crossdresser for nine years. The shop offers a full selection of clothing, wigs, foundation garments (including custom made corsets), breast forms, hip padding, jewelry, make-up and cosmetics, shoes and boots. She provides private, understanding counseling to help the TV/TS become the woman she wishes to be. The basic consultation is to allay any feelings of guilt and to help the novice to emerge from the closet. This appointment includes building a feminine figure on the male body with the proper breast forms, hip and fanny padding, and creating the feminine waist. The new image is analyzed and proper clothing is advised. Further consultations are also available.

Muriel Olive has been bringing her boutique to Fantasia Fair for the past seven years and has been assisting Paula in the daily Fashion Beauty Course (see: pages 28-29). Image-Development and make-up services are available at the Fair, by appointment, for \$30.



PROFESSIONAL SERVICES



60



SPouses & Friends Program



THE PROGRAM

Louise, who has attended previous Fairs with her husband, has volunteered to serve as the Coordinator for this program. The Spouses and Friends Program provided this year is the result of Betty Ann Lind and Neila Miller surveying the wives who had attended the Fair in 1985; and Betty Ann meeting with the leaders of two major spouses groups based in Boston and Chicago. The key elements of the program are:

- First Year Spouses & Friends Orientation.
- Spouses and Friends Morning Coffee Call.
- Spouses and Friends Workshop (SEE: page 33.).
- Couples Workshop (SEE: page 34.).

FIRST YEAR SPOUSES AND FRIENDS ORIENTATION

The chief reason a spouse or friend comes to Fantasia Fair, is LOVE. "Only love would give me the courage to face a room full of Sweet'ums (the giant furry Muppet) in drag," she noted telling about her fears of meeting a group of cross-dressers with her husband, "But, there are other wives there that I must talk to ; to understand." Her statement summed up her motivation for coming to the event. This session will allow the newcomer to have a morning cup of coffee while Neila Miller, a professional therapist, provides an overview of the Fair and the plans for the Spouses & Wives Program for the week. Later in the meeting the group will join the main Orientation. (It should be noted that the newcomers will be invited to attend the beginning of the first session of the Spouses & Friends Workshop so that they can meet the others, prior to the start of the actual workshop.)

SPOUSES AND FRIENDS MORNING COFFEE CALL

Monday through Saturday morning there will be a morning coffee call for the spouses and friends. Louise, will be serving as the coordinator for this informal morning get-together. This free morning meeting is designed to facilitate any plans some of the group may have for the day and give others an opportunity to join in. For example, a woman from the Provincetown community has volunteered to help the group by explaining what will be going on in town and on the Cape during Fair Week. Also, a group of the wives from previous Fairs are working on a very important book to help women who are dating or married to a crossdresser. This meeting will help this group (and others joining them from the group) to plan book work sessions for the coming day. But, most importantly this morning get together will give the group a chance to know each other and share.





SPOUSES & FRIENDS PROGRAM



NEILA MILLER, M.S., L.C.S.W.
Program Coordinator
COUNSELING & THERAPY PROGRAMS

SPOUSES & FRIENDS WORKSHOP (8 hours - \$35).

Neila Miller, one of the most popular professionals to have held a workshop at Fantasia Fair, has trained hundreds of therapists, counselors, social workers and Psychologists. She has been working with the TV/TS community for five years Especially with spouses and friends.

The Spouses and Friends Workshop is in essence group counseling sessions conducted by Ms. Miller, a trained Gestalt therapist. Its structure is built around three work sessions: 1). Saturday, October 18th, 2 to 6 PM, 2). Monday, October 20th, 10 to noon; and, 3). Tuesday, October 21st, 10 to noon. The workshop is designed to help those who are close to cross-dressers reach a better understanding of their world, to learn new ways to perceive themselves and their relationships, and provide positive insights and directions. The workshop will involve a blending of newcomers and women who have attended previous workshops.



PROFESSIONAL SERVICES



83



COUPLES PROGRAM



THE PROGRAM.

On Saturday afternoon after the Health Seminar, Neila Miller will conduct a group counseling-therapy session just for couples.

This workshop, which is a part of the Spouses & Friends Program is scheduled late in the Fair so that both partners will have an opportunity to complete either the Personal Growth Workshops (described on page 27) or the Spouses & Friends Workshop (page 33), which are recommended, but not required, as prerequisites to the Couples Workshop. Because this is a short group session, your prior involvement in the other workshops will help Neila to better understand where you are "coming from" and you will have had prior experience in this type of dynamic.

THE COUPLES WORKSHOP (Two Hours - \$25.).

The theme for this workshop is its purposeful focus rather than what the reader may have in mind. This statement of purpose is:

TO COMPARE POSITIVE STRATEGIES
FOR WORKING ON ISSUES
AND IMPROVING COOMUNICATIONS

Thus, the focus is not on "letting it all hang out", nor how to "cope" (you cope with being stranded on a liferaft in a storm, matters which you have no control over), it's on "how to inter-relate positively in a very personal inter-dependent relationship in such a way that both partners can benefit.

Asheton House
GUESTS

3 Cook Street
Provincetown, MA 02657
617-487-9966

Host:
Jim Bayard

The Fairbanks Inn

Fine Accommodations

private
baths
lounges and
sundecks
ample
parking



A 1776 Captained House

rooms, suites
apartments
working
fireplaces
open
year-round

90 Bradford Street, Provincetown, MA 02657
(617) 487-0386 Don Graichen, proprietor





PHOTOGRAPHY STUDIO



MARIETTE PATHY ALLEN
Program Coordinator
PHOTOGRAPHIC SUPPORT PROGRAM

Mariette Pathy Allen, armed with her camera, has been stalking unwary TV/TSS for several years in an effort to take nature study photographs of them in their natural habitat, such as Fantasia Fair. So if you are camera shy, please, alert her so that she can work her way about you.

Her photographic artistry is superb, and her work has been displayed in galleries in the United States and Europe. In July, Forum published a unique photographic study by her. She is currently in the process of having a book published.

Mariette is our official photographer. (See: Photo & Video Policy, page 21, for the Fair's policies on the use of a camera at our functions.)

She will have a studio for private sittings. She also will be delighted to take photographs, by appointment, of you out and about Provincetown.



PROFESSIONAL SERVICES



3:5



SCHEDULE



THURSDAY		OCTOBER 16		PRE FAIR
C	01	18:30 - 21:30	Outreach Board Meeting	
FRIDAY		OCTOBER 17		FANTASIA FAIR
A	02	10:00 - 12:00	Fair Staff Meeting	
A	03	12:00 - 17:00	Registration	
A	04	15:00 - 17:00	House Leader Orientation	
A	05	17:30 - 20:30	Open House Cocktail Party	
SATURDAY		OCTOBER 18		
A	06	10:00 - 12:00	Orientation	
A	07	10:00 - 11:00	First Year Spouses & Friends Meeting	
A	08	12:00 - 14:00	Seminar Lunch: On The Town	
A	09	14:00 - 17:00	Beauty Fair	
B	10	14:00 - 18:00	Spouses & Friends Workshop, Unit 1.	
B	11	17:00 - 18:30	Speech I, Session 1.	
A	12	18:30 - 20:00	Ladies Cocktail Party	
A	13	20:00 - 23:00	Ladies Night Dinner	
A	14	23:00 - 01:00	House Party	
SUNDAY		OCTOBER 19		
A	15	09:00 - 12:30	Breakfast	
A	16	10:00 - 12:30	Church	
B	17	12:30 - 14:00	Speech I, Session 2.	
A	18	14:00 - 15:00	Fashion Show Audition	
A	19	15:00 - 16:00	Fan/Fair Follies Audition	
B	20	16:00 - 20:00	Personal Growth I Workshop	
C	21	20:00 - 23:00	Dinner on Your Own	
MONDAY		OCTOBER 20		
A	22	09:00 - 10:00	Spouses & Friends Coffee Call	
A	23	10:00 - 12:00	Fashion & Beauty Course	
B	24	10:00 - 12:00	Speech II, Advanced	
B	25	10:00 - 12:00	Spouses & Friends Workshop, Unit 2.	
B	26	12:00 - 17:00	Whale Watch Party	
A	27	15:00 - 16:00	Fashion Show Audition	
A	28	16:00 - 17:00	Fan/Fair Follies Audition	
B	29	17:00 - 18:30	Speech I, Session 3.	
A	30	18:30 - 23:00	Town & Gown Supper and Program	
TUESDAY		OCTOBER 21		
A	31	09:00 - 10:00	Spouses & Friends Coffee Call	
A	32	10:00 - 12:00	Fashion & Beauty Course	
B	33	10:00 - 12:00	Speech II, Advanced	
B	34	10:00 - 12:00	Spouses & Friends Workshop, Unit 3.	
A	35	12:00 - 14:00	Seminar Lunch: Outreach	
A	36	14:00 - 16:00	Fashion Show Rehearsal	
A	37	16:00 - 17:00	Fan/Fair Follies Rehearsal	
C	38	17:00 - 20:00	Dinner On Your Own	
A	39	20:00 - 23:00	Fashion Show	





SCHEDULE



WEDNESDAY		OCTOBER 22		
A	40	10:00 - 12:00	Spouses & Friends Coffee Call	
A	41	10:00 - 12:00	Fashion & Beauty Course	
B	42	10:00 - 12:00	Speech II, Advanced	
D	43	12:00 - 14:00	Seminar Lunch: Sociological	
A	44	14:00 - 17:00	Fan/Fair Follies Rehearsal I	
B	45	17:00 - 18:30	Speech I, Session 4.	
A	46	18:30 - 20:00	Leadership Cocktail Party	
A	47	20:00 - 23:00	Leadership Dinner	
A	48	23:00 - 01:00	House Party	
THURSDAY		OCTOBER 23		
A	49	10:00 - 12:00	Spouses & Friends Coffee Call	
A	50	10:00 - 12:00	Fashion & Beauty Course	
B	51	10:00 - 12:00	Speech II, Advanced	
D	52	12:00 - 14:00	Seminar Lunch: Lifestyles	
A	53	14:00 - 17:00	Fan/Fair Follies Rehearsal II	
A	54	17:00 - 20:00	Fan/Fair Follies Rehearsal III	
A	55	20:00 - 23:00	Fan/Fair Follies Show	
A	56	23:00 - 01:00	Apres Follies Party	
FRIDAY		OCTOBER 24		
A	57	10:00 - 12:00	Spouses & Friends Coffee Call	
A	58	10:00 - 12:00	Fashion & Beauty Course	
B	59	10:00 - 12:00	Speech II, Advanced	
A	60	12:00 - 14:00	Seminar Lunch: Legal	
E	61	14:00 - 20:00	Kite Fly & Picnic	
A	62	14:00 - 16:30	Awards Committee Meeting	
B	63	14:30 - 18:30	Personal Growth II Workshop	
A	64	21:00 - 24:00	Fantasy Ball	
A	65	24:00 - 02:00	Coordinator's Video Party	
SATURDAY		OCTOBER 25		
A	66	10:00 - 12:00	Spouses & Friends Coffee Call	
A	67	10:00 - 12:00	Fashion & Beauty Course	
B	68	10:00 - 12:00	Speech II, Advanced	
E	69	12:00 - 14:00	Seminar Lunch: Health	
B	70	14:00 - 16:00	Couples Workshop	
A	72	18:30 - 20:00	Awards Cocktail Party	
A	73	20:00 - 23:00	Awards Banquet	
A	74	23:00 - 01:00	House Party	
SUNDAY		OCTOBER 26		
A	75	09:00 - 12:30	Breakfast	
A	76	10:30 - 12:30	Church	
C	77	18:30 - 21:30	Staff Party	

- NOTES:
- A. INCLUDED IN FAIR PACKAGE (excluding cocktails).
 - B. FEE REQUIRED
 - C. PAY AS YOU GO
 - D. LUNCH OPTIONAL AT \$3.00 (PAID AT REGISTRATION)
 - E. FEE REQUIRED (INCLUDES A MEAL)

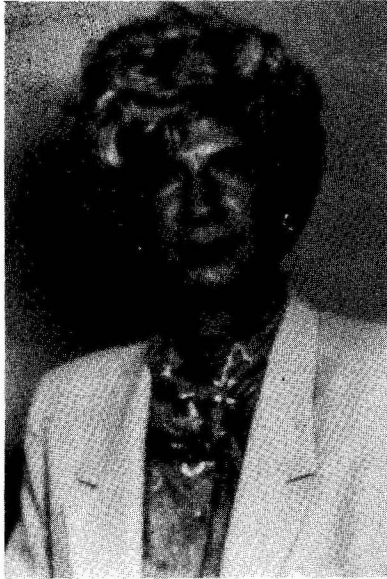


SCHEDULE





OPEN HOUSE COCKTAIL PARTY



SAMANTHA
Program Coordinator
OPEN HOUSE COCKTAIL PARTY

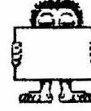
On Friday, October 17th, at 5:30 p.m., your hostess, Samantha (a gracious lady from Texas, will hold a casual Open House Casual Party (cash bar) you may attend as "boy-self" (because some of us are still unpacking and getting settled in) or as "girl-self".

In short, it is a COME AS YOU ARE party to meet the other Fair participants and some of our dear friends from Provincetown. It is a delightful time to unwind after that drive up the Cape (or that exciting landing at the Provincetown Airport) and unpacking at your "sister's" new home. Samantha and her ladies will introduce you around to help with the "ice-breaking". Who knows, you and "the crowd" may go out on the town afterwards for a bite to eat and a bit of disco.





ORIENTATION



Orientation is scheduled for 10:00 A.M. on Saturday, October 18th. A "Continental Breakfast" will be waiting for you along with your sisters and the fantastic Fantasia Fair staff of hard working professionals, as well as some representatives from the town itself. This informal meeting will give you a chance to be brought up to date on much that is explained in this Guide, (So bring it along for notes on changes); and the materials given to you during registration.

By this time most of the participants will have arrived and this opening session will give you a chance to introduce yourself and find out a little bit about your new sisters, and the Fair.



BETTY ANN
Coordinator
FANTASIA FAIR



EVENTS





ON THE TOWN SEMINAR



LAURA
Program Coordinator
ON THE TOWN SEMINAR

The ON THE TOWN luncheon seminar will be held at noon on October 18th, under the capable leadership of Laura (noted for her part as an "Andrew Sister" in the Follies).

Laura, and her panel will discuss various aspects of "going out in public on the town" with a partial focus upon Provincetown. (Prior Fair participants should be aware that this panel replaces the old Sociological Seminar.)

For "new-comers" and "old-timers" alike Laura's panel will provide some practical suggestions on how to handle yourself in public, particularly when you are confronted by unusual situation or confrontations. Questions will be handled by the panel. Laura promises a light and lively seminar.

The luncheon is a part of your Fan/Fair package.





BEAUTY FAIR



GERRI
Program Coordinator
BEAUTY FAIR

BEAUTY FAIR

This new event is built about the multi-station evaluation process called the "County Fair System", hence its name BEAUTY FAIR. Each, of several stations, will focus on an aspect of Fashion and Beauty (e.g. Facial Shape). At each station there will be an evaluator, usually a trained beauty or fashion consultant, who will select from several choices a particular "image" which best suits you (e.g. if your face is Heart Shaped she will provide you with materiel for a three ring binder which will provide guidance on makeup, etc., for a heart shaped face).

In addition to these on the spot evaluation sheets you will receive related materiel of a general nature within the Fashion/Beauty context so that when you have completed all the stations in the process you you will have a guidebook that is YOURS.

Gerri, a fashion & modeling school graduate, has been working through-out the Summer with Betty Ann on assembling this materiel and several professionals have volunteered their services for this event to be held Saturday, October 18th, starting at 2 PM.



EVENTS



40



LADIES NIGHT



JENNY,
Chairperson,
Ladies Auxillary,
Provincetown Chapter of
S.I.S.T.E.R.S

You are cordially invited to attend a Cocktail Reception held by the Ladies Auxillary, Provincetown Chapter, of the Society of International Studies for the Teaching of Everything Regarding Sex. As a new member of the Society you will be formally introduced to the Officers of the Society and the other ladies present, who will be very interested in "getting to know you, all about you" (page 18, YOUR LEGEND).

After the Cocktail Party there will be a supper with a keynote speech from our Chairperson, Mrs. Jenny Stevens. As some of you know, Mrs. Stevens is married to Christopher Stevens, the noted Hollywood producer of Independent films for public television. The Stevens's have three girls. Mrs Stevens is best known for her childrens books, and her active involvement in numerous charitable causes.

Following the supper there will be a Chapter Meeting.

The Society Ladies have already paid for the event, but the coctails will be offered from a cash bar.





BREAKFAST & CHURCH



BREAKFAST

Each Sunday morning you can gather at your leisure with your sisters for a lovely breakfast where you can discuss plans for the day; and perhaps bid farewell to those who are on their way home.

And, of course, if you come early enough you can have a nice meal before going to church in your Sunday-Go-To-Meeting Clothes.

CHURCH

Each year our sisters make their pilgrimage to the Provincetown Universalist-Unitarian Church on Commercial Street. This is the same church where we hold our Town & Gown Supper and Program. During Fantasia Fair it is our church where we gather to meet and worship with our dearest sisters and friends.

In the meeting hall of this church there is the most outstanding example of wall art called trome l'oeil ("fools the eye"). When you first see this beautiful painting you will not believe that the architectural renderings (all in three dimensions) are really painted on the wall. These wonderful illusions were created in 1851, by Karl Wentz, a young talented Dutch painter. Each year our "church rental" for the Town & Gown has been donated by the Fair to the restoration fund for this beautiful work of art.

336 COMMERCIAL
487 0319

Pilgrim House

Provincetown's
Premier
Showplace

***Provincetown's
Most Affordable Hotel***
50 Rooms

✦ Top Name Entertainment ✦
✦ Madeira Room ✦
✦ Upstage Lounge ✦

**The Pilgrim House Welcomes
Fantasia Fair 1986**

Major Credit Cards Accepted
Ample Parking



EVENTS





WHALE WATCH



CINDY
Program Coordinator
WHALE WATCH PARTY

"There she blows!"

Put on your rain gear ladies (women rough it too, you know) and take a boat ride out into the Atlantic Ocean, along with the other tourists, to see a "gam" of great hump back whales as they migrate. Perhaps you will hear their siren songs. (Scientists have just discovered that their "singing" involves a unique frequency wave signal which may well travel hundreds of miles!)

Cindy, our coordinator from the North Star State (Minnesota) is proud to relate that ocean going ships can reach her state, but she hasn't seen any whales there. So, she volunteered for this program to make sure that she can see the whales.

Cindy advises that this boat ride takes about three and a half hours and there is a fee of \$35, payable with your PRE-REGISTRATION APPLICATION (or at registration). She also wants to remind you to tell Eve (Fashion Show) and Maureen (Follies) that you are going if you are planning to be in these events so they can schedule your auditions for a different time.



TOWN & GOWN DINNER



PENNY
Program Coordinator
TOWN & GOWN DINNER

Each year at the Universalist-Unitarian Church our Fair has sponsored a very special dinner with the people of Provincetown very similar to the traditions of Thanksgiving. This town and gown dinner has afforded us the wonderful opportunity to meet over the dinner table the people from the town curious enough to meet us on openly friendly terms, to find out why we do what we do. The delights of the meal and the conversation has brought some of our friends back year after year.

The main ingredient for the success of this meal has been the fact that it has been organized over the past years by Penny, and her delightful Flo, (and several other family members). Because of the importance of this major event almost every participant of the Fair, and some towns people, work to put the dinner together from setting up the dinning room to doing the dishes afterwards. (If you have ever wondered what it was like to be one of the ladies responsible for helping out to put together your church suppers, here is your chance to experience the fantasy. Please, bring an apron, my dear.)



EVENTS



45

TOWN & GOWN PROGRAM



WINNIE
Program Coordinator
TOWN AND GOWN PROGRAM

After supper with our special guests, and that last minute cup of coffee is finished, we all spend an interesting evening with the townsfolk. Winnie, who has been to every Fair, and her panel will present various viewpoints on the nature of the crossdressing community to their interested audience.

Although we see many familiar faces in the audience each year, many new people from the Cape come to visit us this night. They have heard of our event and they are very interested in finding out why we enjoy "The Hobby of Kings".

In fact, this may be an opportunity for you to join in the question and answer period, to share with the others your ideas in this classic New England town forum. So far there have been just about as many ideas about this subject as there are cross-dressers, so your theories are certainly welcome!

See you there...





OUTREACH SEMINAR



ARIADNE
Executive Director
HUMAN OUTREACH &
ACHIEVEMENT INSTITUTE

All registered participants of Fantasia Fair are Associate Members of the Outreach Institute for one year. Membership includes: Annual subscription to the Institute's quarterly newsletter; 10% discount on all items ordered from the Book & Reprint Catalog; and, advanced notice of special programs, seminars, and workshops.

This seminar, presented by Ariadne Kane, is, (in essence), its Annual Report to its membership. The director will describe various activities in which the Institute participated in during the past year.

In addition to being the "architect" of Fantasia Fair, the Outreach Institute is the only organization recognized by the medical/psychological community. Outreach gives seminars and workshops for helping professionals, and offers information to both crossdressers and professionals. Because of major changes in the paraculture during the past year, and other events, there have been some changes in the Outreach itself.

Come to the free luncheon seminar, held Tuesday, October 21st, at noon, to find out how these changes may effect you...



EVENTS





FASHION SHOW



EVE
Program Coordinator
THE FASHION SHOW

Women from through-out the Cape, and alot of interested men, will gather on Tuesday evening, October 21st, at 8 p.m., to watch a wonderous Fashion Show, conducted by Eve, and her beautiful, Carol (who is a professional model). Under their direction our models strut their stuff in their own favorite fashions (from bargain basements to Neiman-Marcus Paris Originals).

What you model is up to you, so long as it is in good taste. Basically, the Fashion Show presents the full range of women's fashions from evening gowns to sports wear and specialty costumes (such as wedding gowns, Geisha Gowns, and the like). Usually you can display for our very receptive audience one to three outfits.

There will be at least two hours of rehearsal practice and instruction offered by Eve and Carol, so come on and be a model, it's a wonderfully exciting thrill.

But, if you are too shy, Eve and Carol, and your sisters can certainly use your help in a myriad of jobs required to help others from wardrobe changers to go-fers...



EVENTS





SOCIOLOGICAL SEMINAR



VIRGINIA
Program Coordinator
SOCIOLOGICAL ISSUES SEMINAR

Back in the 1950's Virginia Prince (yes, dear, that VIRGINIA) began a curious personal odyssey which has changed all of our lives. Since we must be past the thirtieth anniversary of the first issue of Transvestia it might be well to pause and recount the evolution of awareness of a particular aspect of that journey.

In responding to a request that she lead the seminar Virginia wrote a sentence which focuses upon that aspect: "Getting it clear in our minds that we are a gender variation and not a sexual one. Which leads into a discussion of the arousal aspects of cross dressing, a field that shrinks always make much of and don't really understand." How did Virginia become aware of the distinctions she draws in the first of these very intriguing sentences, and what should the shrinks understand? Virginia will tell us...

This fascinating seminar is a part of the Fair package, but the luncheon itself (which is optional) costs \$3.



EVENTS



119



LEADERSHIP RECEPTION



LYNDA
Program Coordinator
THE LEADERSHIP RECEPTION

The average Fantasia Fair is also a gathering of para-culture leaders from all over the United States, and different parts of the world. Many of our sisters spend hundreds of dollars from their own pockets and hundreds of hours from their busy lives to serve others. Often as not these very special people find their reward in their service to others. But, we have set aside a special night, Wednesday, October 22nd, to say a heartfelt thank-you.

Lynda, and her dearest Marilyn, have arranged this special evening with its Leadership Reception Cocktail Party and Dinner for all of our participants and guests. If you have ever wondered what is happening through-out the country under the guidance of our various groups, this will be a chance to get a very brief glimpse.

This event (with the exception of cocktails) is included in you Fair package.





LIFESTYLES SEMINAR



D.K. ABBASS, PhD
Program Coordinator
LIFE-STYLES ISSUES SEMINAR

Dr. D.K. Abbass, is an anthropologist, who has taught anthropology and sociology for ten years and currently is on the faculty of a New England University. Kathy, (who is a genetic female and feminist); because of her interest in the paraculture, and academic credentials in cultural anthropology is a natural to facilitate a seminar dealing with the various cross dressing life-styles. (She might even define the reason why our lifestyle grouping within the Society at large is referred to as a "para-culture".)

Our last year's post Fair evaluations, submitted by the participants, indicated a basic demand for a panel on what might be termed "post transition" life-styles of those of us who have decided to live basically full time as a woman. Not just the post-operative transsexual, but other life styles as well. We are assembling a panel consisting of women who will explain the pros and cons of their current public life-styles.

This unique seminar is part of the Fair package, but the luncheon itself (which is optional) costs \$3.



EVENTS



60

FAN/FAIR FOLLIES



MAUREEN
Producer - Director
FAN/FAIR FOLLIES

Maybe your secret FANTASY has been to perform in front of a live audience; to sing like Whitney Houston, be abrasive ala' Joan Rivers, do a seductive strip tease, or...your thing. You can do it all, or much more at the Twelfth Annual Fan/Fair Follies.

Performing on the live stage in the Fan/Fair Follies will be a most memorable part of your Fair experience. Many people from the Cape (and much further) come to see this wonderful two part vaudeville show every year. And many Fair participants come to the Fair year after year just to be in the SHOW.

In terms of individual acts, there are both live and mimicked song stylists, live comedy, musical instruments, magic, or any legitimate stage act. Some girls (including spouses and friends) do an act in each part of the show.

For those who have never been on stage before, we have drop in professionals who will help you with your make-up, costume and even your act. Sister performers and the show's staff are always ready to help.



FAR/FAIR FOLLIES

When planning your act WHICH CAN NOT BE LONGER THAN FIVE MINUTES, remember that you are creating your fantasy and you are the star. In the planning, the four basic elements of a good act are: content, image, movement, and soul.

Content is the theme of your act. If you are doing a song, this would be the theme. Last year one of our girls built a "routine" (ala' Henry Gibson) on a brief poem.

Image is what you portray through costuming and make-up. Madonna's thrift shop attire, Carol Channing's wig and eye lashes, Minnelli's cabaret costume are all examples of creating an image.

Movement is how you put motion to the image and content. Some exaggeration of movements (hand gestures cued by words of a song, i.e. hand to heart on word "heart"), or movements learned through the study of video of a particular star being mimicked, are very important. You will be encouraged to walk out into the audience since this is a professional cabaret theater. Our professionals can help you with this part of your act.

Soul is the most difficult to describe, it is the emotional thrill of your total involvement in the act that the audience feels, that bridge of empathy between your act and them, a star quality which can turn a mediocre act into a terrific one. Because our girls are so involved in doing their thing with such joy, this is often enough to create soul.

So all you have to do now is to get an act. Or the show staff may be able to find one for you, although it is best to pick out your own act prior to the Fair so you can practice it. Limit it to five minutes. Pick your music carefully, centering on solo vocals without back up singers (unless you bring them to the Fair with you). If you are using a recording bring the ORIGINAL COMMERCIAL TAPE (not 8 track) OR RECORD with you, not a professional or home-made re-recording. We will cut a copy of your piece on a tape for your use on a personal tape recorder. But, your MASTER RECORDING must be left with us until after the show for professional and technical purposes.

If performing is not your forte, then it is critical that you consider helping us with the production of the show. We can use your services...

Whether you are a star or crew, there's no business like show business, and none more fun than the FOLLIES...





LEGAL SEMINAR



NAOMI
Program Coordinator
THE LEGAL SEMINAR

Our own Naomi, Mistress of Ceremonies for the Fan/Fair Follies, is a mid-western attorney, who has researched various aspects of the law (at the federal, state, and local levels of government) as it applies to the average crossdresser. She will present an overview on the legal aspects of gender issues in the 80's.

She will then lead a common sense, no nonsense, approach to a You and The Law discussion in terms of such matters as: 1). Identity; 2). Risks of public behavior; 3). What to do when you are confronted by the law; and, 4). What to do afterwards if you are arrested.

This luncheon seminar will be held at noon, Friday, October 24th. Although, advanced registration is required, the luncheon is included in your Fantasia Fair package.





Fantasy Ball



RAMONA
Producer - Director
FANTASY BALL

Ramona, has been to every Fair, and she loves it. When asked if she would be interested in running the Fourth Annual Fantasy Ball, she paused, gulped hard, and replied; "ONLY IF IT WILL BE A MARDI GRAS STYLE COSTUME PARTY!"

SO WELCOME TO MARDI GRAS IN OCTOBER!!!

Bring your Halloween Costume, your FANTASY gown, or Beaux Arts delight (so long its not too risque)! Be Barbarella, Scarlet O'Hara, Madonna, Sally Ride or Don Juan's reckless daughter, or your favorite heroine or hero! Be sure to bring a mask. "Who was that masked woman, Tonto?"

There will be dancing, party - party - party, and a panel of judges who will award prizes for COSTUMES, MR. and MS. TURN-ABOUT PROVINCETOWN, and many other fun categories. Watch the crowning of MS FANTSY BALL DEBUTANTE and MR. FANTASY BALL.

This event is a part of your Fair package, and we will be joined by the people of the Cape, who like MARDI GRAS PARTIES too!





VIDEO PARTY



MAXINE
Program Coordinator
TECHNICAL & VIDEO SYSTEMS
(Since 1979.)

It is mid-night Friday, October 24th, and the Fantasy Ball is over. It's time to sit down and relax, to watch a little TV. The program; FANTASIA FAIR, 1986!

Maxine, will roll out the VCR and you can watch yourself, as you waltz beautifully across the platform in the FASHION SHOW or "Do your Act" at the FAN/FAIR FOLLIES! You will see, hear, and feel the excitement the audience felt.

This informal party will truly allow you to see yourself as others see you. Yes, Maxine's magic camera is a wonderful joy; because, somehow those "mistakes" we made just seem to blend away, especially after a few glasses of wine...

In fact, it's kind of nice to know that you "Did the Whole Thing!" A delight...An experience to remember...





KITE-FLY PICNIC



JOANNA
Program Coordinator
KITE FLY AND PICNIC

THE KITE FLYING EXTRAVAGANZA & PICNIC (Six Hours - \$20.)

In 1979 a group of the ladies, exhausted from the intense daily push of the Fair, went to a local kite shop and soon set forth with their new found joys to just spend a child like afternoon flying their kites as the world spun by. When they paused from their hard work of holding a string, they ordered up a pizza and had a picnic. This playful time at the beach remains unchanged, except that the owner of the kite shop and a few of her friends join in the fun.

Join us on October 24th, Friday, at 2 PM, at Race's point on the wonderful Cape Cod National Seashore for fun and a picnic. A sign-up sheet will be available at the Fair. The cost of the Extravaganza is \$20 (a kite, string, and the pizza are included in the fee).



EVENTS



57



HEALTH ISSUES SEMINAR



LEO WOLLMAN, MD.
Program Coordinator
HEALTH ISSUES SEMINAR

Each year the Outreach Institute invites a guest speaker, who has explored some Health area related to our phenomenon, to the Fair. Our guest speaker is not given any "guidance" as to subjects to cover, except that it be relevant to their explorations.

This year we are honored to have Dr. Leo Wollman. Dr. Wollman, gynecologist, has explored the Health related area of pre-operative evaluation of individuals who believe that they are transsexuals. His pre-operative approach, as noted by Benjamin in The Transsexual Phenomenon, involves three separate pre-operative evaluations; psychiatric, psychological, and medical therapy. Dr. Wollman has worked with hundreds of preop transsexuals by providing evaluation through medical therapy.

Like most of us, Dr. Wolman, is blending his trip to the Fair into a vacation in Provincetown. He, and his wife, will be with us for a few days taking in the sights...

The Health Issues Seminar requires early registration, costs \$40, and includes a luncheon.





AWARDS BANQUET



JANE
Program Coordinator
AWARDS BANQUET

A truly wonderous evening will suddenly arrive, as if by magic, on Saturday, October 25th, at 6:30 PM. You will be surrounded by beautiful women all dressed in lovely formal gowns; and you are one of them! There is a strange dream like quality to that moment when you realize how much you have all grown to become true sisters. As you sip a cocktail you muse over how it can be that in such a short time your "plainest" sister has been transformed into such a pretty woman. Many such thoughts crowd your mind as you drift into the banquet room to join the others in a formal sit down supper; with Jane, and her beloved Louise, serving as your hostesses.

The Awards Banquet is an event filled with memories for those who return year after year to Fantasia Fair. As the awards are presented one by one (Ms. Femininity, Ms. Best Dressed, Ms. Most Helpful, Ms. Cinderella, Ms. Congeniality, and, of course, MS. FANTASIA FAIR and THE OUTREACH AWARD) we think of the beautiful ones who have done so much to make this Fair, and those in the past such delightful events, the program coordinators, who in turn receive their service awards.

The Awards Banquet is always an experience to remember..



Recognition



59



RECOGNITION



MS. FANTASIA FAIR

1977 WINNIE BRANT
 1978 JACKIE HANIFIN
 1979 JULIA LaFAYE
 1980 BETTY ANN LIND
 1981 FRANCES GIBSON
 1982 JANNA PAGE
 1983 NAOMI OWEN
 1984 PAULA NIELSON

1985 EVE BURCHERT

MS. CINDERELLA

1975 DENISE REINECKE
 1976 MARY ELLEN DOWDRICK
 1977 JACKIE HANIFIN
 1978 DOROTHY SHAB
 1979 SHARON HESS
 1980 HEIDI HYLANDS
 1981 WENDY PARKER
 1982 PRISCILLA ANNE GREENE
 1983 SHERRY MARLOWE
 1984 STEPHANIE KINSLEY
 1985 VALERIE PARKER

MS. BEST DRESSED

1975 ELANDA MERZ
 1976 KATHY GUERIN
 1977 ANGELA STUBER
 1978 PATRICIA WELLS
 1979 MICHELLE WILLIAMS
 1980 MICHELLE WILLIAMS
 1981 MICHELLE GREEN
 1982 ANNE MACADAM
 1983 LAURA KARCHUTA
 1984 EVE BURCHERT
 1985 MARA GUZMAN

THE OUTREACH AWARD

1979 BETTY ANN LIND
 1980 SHARON HESS
 1981 ELIZABETH T. SHAW
 1982 RACHIA HEYELMAN
 STAN SORRENTINO
 1983 CHARLOTTE MATTA
 ROBERT C. HARRISON
 1984 MAXINE McDONALD
 SONJA MARIE SMITH
 1985 JANE HOFFMAN

MS. MOST HELPFUL

1975 BRANDY ALEXANDER
 1978 MERISSA SHERRELL LYNN
 1979 MAXINE McDONALD
 1980 JENNY CHARVAT
 1981 DELORES CARTER
 1982 DEDE JONES
 1983 ELAYNE COYLE
 1984 SHEILA KIRK
 1985 CHARLENE BYRD

MS. FEMININITY

1977 SHARON RUETH
 1978 HOLLY LEATHER
 1979 BOBBIE BODHAN
 1980 ELAINE WILLEY
 1981 JANE HOFFMAN
 1982 SANDY MACHIN
 1983 KRISTIE FERREIRA
 1984 PAM VAN BUREN
 1985 IRIS HANNA

THE FLORENCE JARDINE

MS. CONGENIALITY AWARD

1975 FLORENCE JARDINE
 1976 ALICE MILLARD
 1977 MICHELLE ANN BOLIS
 1978 SANDY EISENBRAUN
 1979 KATHLEEN KARTER
 1980 NAOMI OWEN
 1981 NAOMI OWEN
 1982 EVE BURCHERT
 1983 LINDA WALKER
 1984 LISA BEAL
 1985 JENNY STEVENS



A warm Welcome to Tantasia Fair

from

Hargood House

Sebastian's LONG & NARROW RESTAURANT
177 COMMERCIAL STREET
PROVINCETOWN, MA 02657

DINNER

• APPETIZERS

SHRIMP COCKTAILS	5.25
ESCARGOTS	4.75
SICILIAN ARTICHOKE	3.75
PORTUGUESE STUFFED CLAMS	3.75
POLYNESIAN CHICKEN WINGS	3.75

• SOUPS

NEW ENGLAND CLAM CHOWDER	1.95	2.95
BISQUE DE TOUR	1.95	2.95

• ENTREES •

All Entrees Include House Salad
Baked Potatoes or Rice Pilaf & Vegetables

• OCEAN'S BOUNTY

Native Lobster Tails THREE DELICIOUS BOILED TAILS SERVED WITH BUTTER	12.95
Lazy Man Lobster MOUTH WATERING MEAT WITH OUR OWN SERVED STUFFING SERVED TO PERFECTION	10.95
Boiled Lobster PRICE ACCORDINGLY	-
Stuffed Shrimp 4 LARGE SHRIMP SERVED IN A CREAMY SAUCE WITH OUR OWN STUFFING SERVED TO PERFECTION	9.95
Shrimp Scampi GENTLY SAUTÉED IN GARLIC, HERBS & WHITE WINE	9.95
Broiled Scallops TENDER SWEET NATIVE SCALLOPS BROILED IN LEMON BUTTER	9.95
Deep Fried Scallops DEEP FRIED GOLDEN NATIVE SCALLOPS SERVED WITH TARTAR SAUCE	9.95
Broiled Native Fish FRESH CATCH OF THE DAY BROILED WITH LEMON BUTTER	7.95
Deep Fried Catch of the Day FRESH CATCH OF THE DAY, FRESH PEAS AND SERVED WITH TARTAR SAUCE	7.95

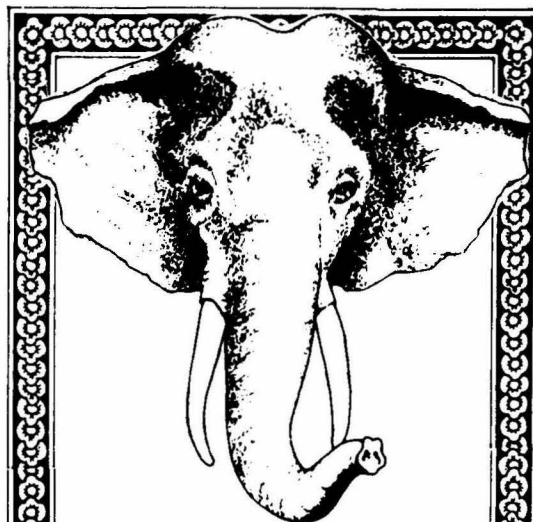
• BUTCHER'S CHOICE

Rack of Lamb FULL RACK OF SEVEN FRENCH TRIMMED RIBS, LIGHTLY BUSTED WITH ROSEMARY AND GARLIC, SERVED WITH MINT JELLY	12.95
New York Sirloin Steak JUICY 10 OZ. SIRLOIN BROILED TO YOUR TASTE	9.95
Prime Rib NO TIES	9.95
Broiled Pork Chops 2 THICK CHOPS SERVED WITH OUR APPLE ACCOMPANIMENT	9.50

• POULTRY & GAME

Chicken Sebastian THIS TASTY BIRD IS PREPARED BY OUR CHIEF IN MANY WAYS AT REQUEST OF RESERVATION	7.95
Chicken Parmigiana AN ITALIAN FAVORITE SERVED WITH LINGUINE	8.50
Roast Duckling THIS CRISPY DUCK IS SERVED WITH OUR APRICOT SAUCE	10.95

Twilight Dinner Served from 3:30 - 6:30pm Daily
MINIMUM PER PERSON \$3.00
PLATE SHARING CHARGE \$3.00
GRATUITIES NOT INCLUDED IN CHECK
TAXES, MEAL & BEVERAGE TAX 5%
MASTER CHARGE, VISA & AMERICAN EXPRESS ACCEPTED;
MINIMUM \$10.00



ELEPHANT WALK INN

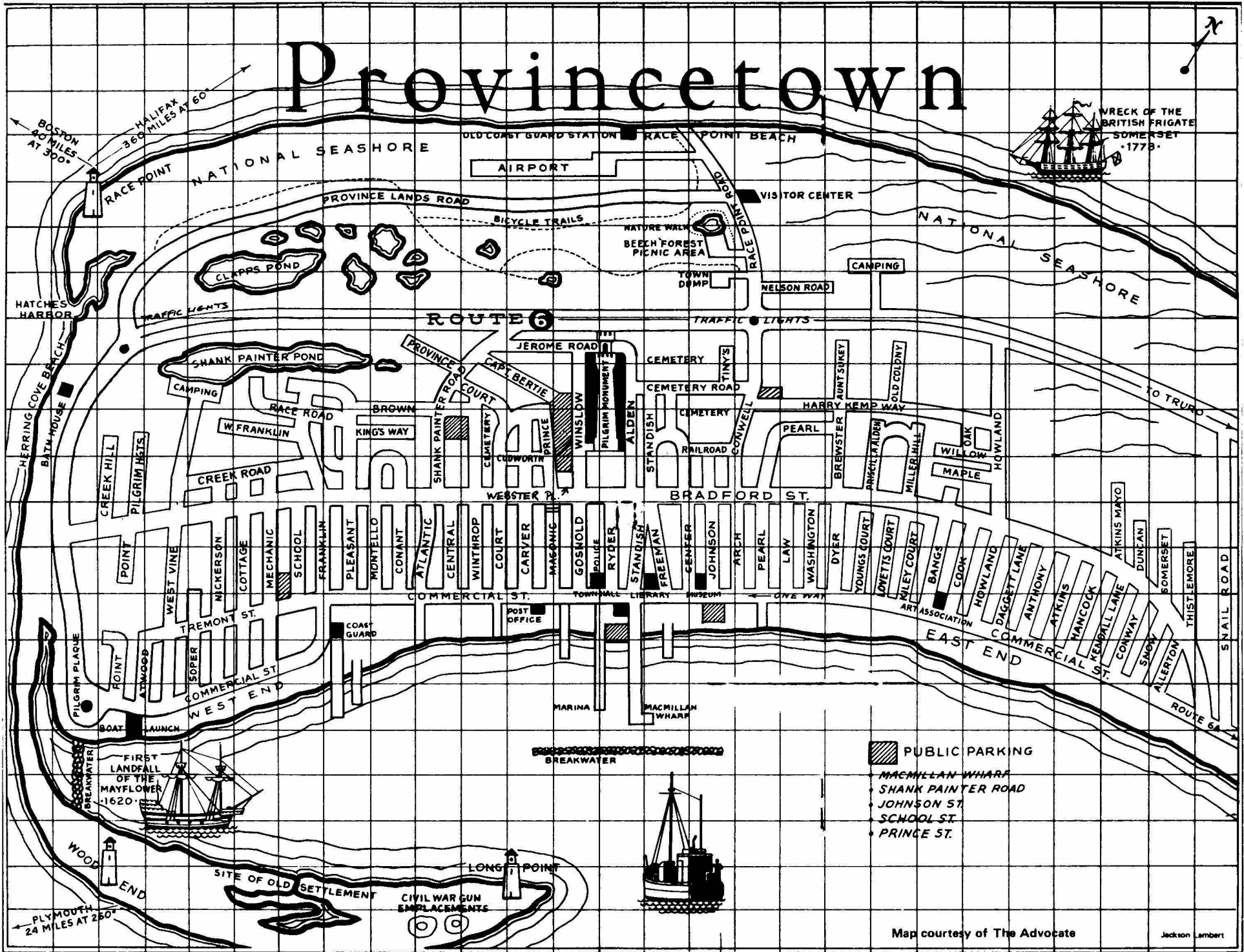
Private Baths/Parking
Central Location
Color TV's/Refrigerators
Lounge & Sun Decks
MC/VISA/Am Ex


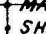
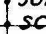



156 Bradford Street
Provincetown, MA 02657

(617) 487-2543

Len Paoletti

Provincetown



-  PUBLIC PARKING
-  MACMILLAN WHARF
-  SHANK PAINTER ROAD
-  JOHNSON ST.
-  SCHOOL ST.
-  PRINCE ST.

Map courtesy of The Advocate

Jackson Lambert